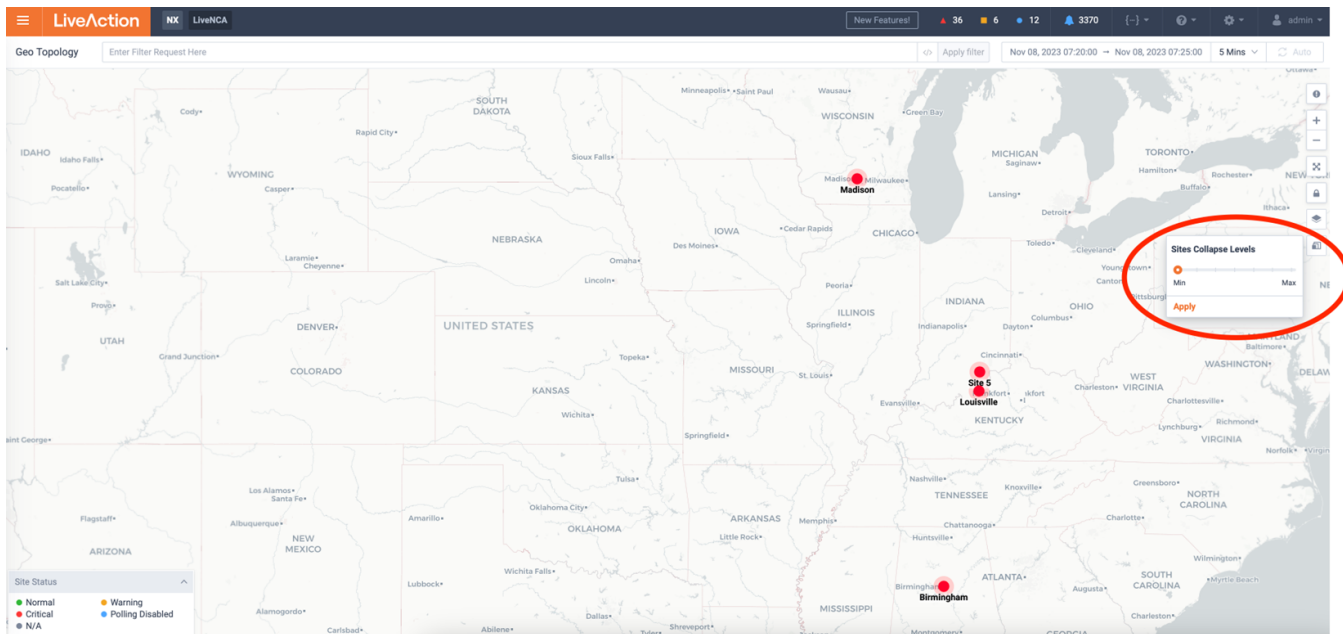


## What's New in LiveNX 23.4.0

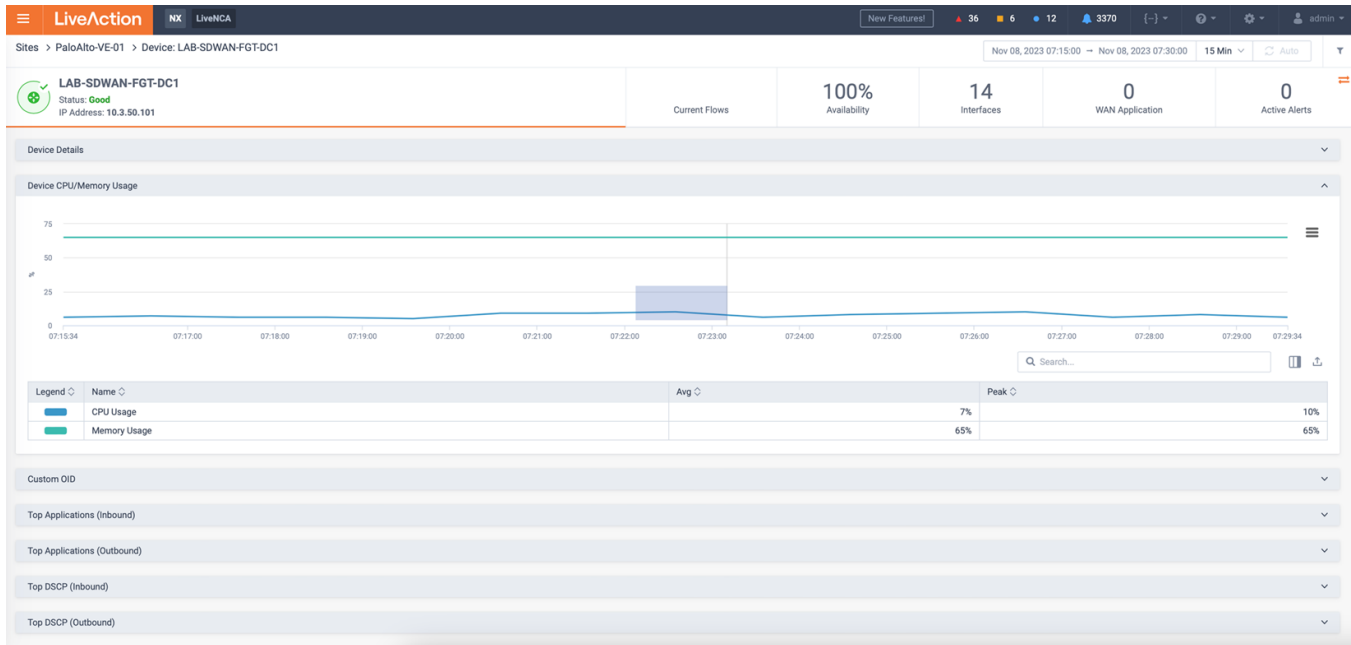
### New Geo Topology features

- Customizable site grouping/roll-up



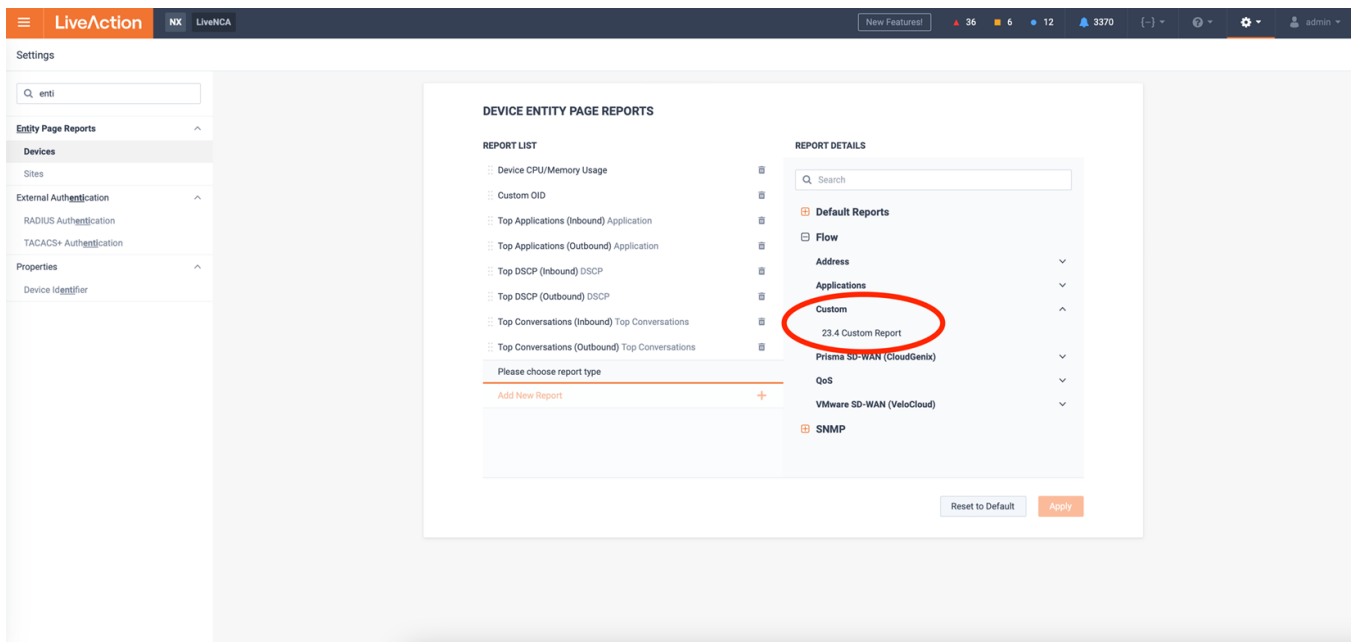
## Graphing Enhancement

- X/Y Zoom for more granular data



## Additional Device Entity Page Customizations

- Custom report support (Long term processing must be enabled)



# Enhanced HPE (Aruba) Silver Peak Support

- Application Performance flow metrics now available

LiveActionNX

New Features!9162853133359059

Sites > Unspecified > Device: SilverPeak-2-202\_17

SilverPeak-2-202\_17

Status: Warning

IP Address: 10.4.202.17

Current Flows

Availability

1 Interfaces

582 WAN Application

1 Active Alerts

All Flow Types

2 mins

Refresh table

Enter Filter Request Here

Apply filter

SERVER ...	CONN...	NUMBER OF CONNECTIONS	SERVER RESPONSE COUNT	SERVER RESPONSE DELAY	NETWORK TO SERVER DELAY	NETWORK TO CLIENT DELAY	CLIENT PACKET RETRANSMISSION COUNT	CLIENT TO SERVER NETWORK DELAY	APPLICATION DELAY	CLIENT TO SERVER RESPON
Server I	Connec	Number of Connections	Server Response Count	Server Response Delay	Network to Server Delay	Network to Client Delay	Client Packet Retransmission Count	Client to Server Network Delay	Application Delay	Client to Server Respo
33...	38.2.253...	38.2.253...	1	1	1 s	1 s	0 ms	0	1 s	1 s
33...	38.2.253...	38.2.253...	1	1	1 s	1 s	0 ms	0	1 s	1 s
33...	38.2.253...	38.2.253...	1	1	1 s	1 s	0 ms	0	1 s	1 s
33...	38.2.253...	38.2.253...	1	1	1 s	1 s	0 ms	0	1 s	1 s

# Enhanced Gigamon Support

- Gigamon TCP RTT flow metrics now available

LiveActionNX

New Features!9172863132359091

Sites > Unspecified > Device: LD-34359-Gigamon-RTT

LD-34359-Gigamon-RTT

Status: Good

IP Address: 10.4.202.65

Current Flows

Availability

1 Interfaces

588 WAN Application

0 Active Alerts

Basic Flow

5 mins

Refresh table

Enter Filter Request Here

Apply filter

TIME	FLOW R...	TCP RTT	TCP RTT...	APPLIC...	SRC VLAN	IN DST MAC	IN SRC MAC	SRC IP A...	DST IP A...	IP VERS...	PROT...	SRC PORT	DST PORT	IN IF	NEXT HE...	INITIAT...	RESPON...	FLOW
Time	Flow Re	TCP RT	TCP RT	Applica	Src VLF	In Dst MAC	In Src MAC	Src IP #	Dst IP #	IP Versi	Protoco	Src Por	Dst Por	In If	Next He	Initiator	Respon	Fl
Wed, 8 Nov 2023 12:55:21 GMT	1	489.69 ms	0 us	youtube***	0	3cfd fea3.e2ea	3cfd fea3.e2e9	10.60.2.11	10.50.13...	4	TCP	80	2000	256	HOPOPT	8	63	00
Wed, 8 Nov 2023 12:55:21 GMT	1	394.62 ms	0 us	youtube***	0	3cfd fea3.e2e9	3cfd fea3.e2ea	10.60.2.11	10.50.8.15	4	TCP	80	2000	256	HOPOPT	15	52	00
Wed, 8 Nov 2023 12:55:21 GMT	1	389.86 ms	0 us	youtube***	0	3cfd fea3.e2ea	3cfd fea3.e2e9	10.50.11...	10.60.2.11	4	TCP	2000	80	256	HOPOPT	13	60	00
Wed, 8 Nov 2023 12:54:35 GMT	1	267.25 ms	0 us	youtube***	0	3cfd fea3.e2e9	3cfd fea3.e2ea	10.50.15...	10.60.2.11	4	TCP	2000	80	256	HOPOPT	5	36	00
Wed, 8 Nov 2023 12:55:21 GMT	1	212.12 ms	0 us	youtube***	0	3cfd fea3.e2e9	3cfd fea3.e2ea	10.50.21...	10.60.2.11	4	TCP	2000	80	256	HOPOPT	3	36	00
Wed, 8 Nov 2023 12:56:22 GMT	1	206.37 ms	0 us	youtube***	0	3cfd fea3.e2e9	3cfd fea3.e2ea	10.60.2.11	10.50.32...	4	TCP	80	2000	256	HOPOPT	4	34	00
Wed, 8 Nov 2023 12:56:02 GMT	1	3.48 ms	294 us	https***	0	0201.939c.9951	0201.939c.983b	10.1.1.246	11.1.3.50	4	TCP	49636	443	256	HOPOPT	4	3	00
Wed, 8 Nov 2023 12:55:21 GMT	1	338 us	0 us	youtube***	0	3cfd fea3.e2ea	3cfd fea3.e2e9	10.50.12...	10.60.2.11	4	TCP	2000	80	256	HOPOPT	15	72	00
Wed, 8 Nov 2023 12:55:21 GMT	1	274 us	0 us	youtube***	0	3cfd fea3.e2ea	3cfd fea3.e2e9	10.50.32...	10.60.2.11	4	TCP	2000	80	256	HOPOPT	18	61	00
Wed, 8 Nov 2023 12:55:21 GMT	1	221 us	0 us	youtube***	0	3cfd fea3.e2ea	3cfd fea3.e2e9	10.50.26...	10.60.2.11	4	TCP	2000	80	256	HOPOPT	2	2	00
Wed, 8 Nov 2023 12:55:17 GMT	1	177 us	0 us	youtube***	0	3cfd fea3.e2e9	3cfd fea3.e2ea	10.50.36...	10.60.2.11	4	TCP	2000	80	256	HOPOPT	3	0	00
Wed, 8 Nov 2023 12:54:03 GMT	1	154 us	169 us	google-ta...	0	0201.939c.9951	0201.939c.983d	10.1.2.241	11.1.3.91	4	TCP	8281	443	256	HOPOPT	5	4	00
Wed, 8 Nov 2023 12:57:47 GMT	1	154 us	169 us	google-ta...	0	0201.939c.9951	0201.939c.983d	10.1.2.241	11.1.3.91	4	TCP	8281	443	256	HOPOPT	5	4	00
Wed, 8 Nov 2023 12:55:21 GMT	1	127 us	0 us	youtube***	0	3cfd fea3.e2e9	3cfd fea3.e2ea	10.50.34...	10.60.2.11	4	TCP	2000	80	256	HOPOPT	12	86	00
Wed, 8 Nov 2023 12:55:21 GMT	1	93 us	0 us	youtube***	0	3cfd fea3.e2ea	3cfd fea3.e2e9	10.50.29...	10.60.2.11	4	TCP	2000	80	256	HOPOPT	12	72	00
Wed, 8 Nov 2023 12:56:18 GMT	1	71 us	0 us	youtube***	0	3cfd fea3.e2ea	3cfd fea3.e2e9	10.60.2.11	10.50.5.2...	4	TCP	80	2000	256	HOPOPT	12	36	00

# WAN Utilization Story Update

- Filtering on Business Hours

LiveActionNX

New Features!9132873132359141

WAN Utilization

Time Window: Business Hours Only

Press [Tab] to add new tagApply filterNov 08, 2023 07:00:00 → Nov 08, 2023 08:00:00Hour

Q Search...

SITE	DEVICE	SERVICE PROVIDER	INTERFACE NAME	INTERFACE LABEL	DIRECTION	CAPACITY	AVERAGE UTILIZATION	PEAK UTILIZATION	95TH PERCENTILE UTILIZ...	STATUS
Site	Device	Service Provider	Interface Name	Interface Label	Direction	Capacity	Average Utilization	Peak Utilization	95th Percentile Utilizat	Status
Unspecified	MICRO-CSR-15.sd.liveac...	Citicable	GigabitEthernet2	-	Inbound	14 Mbps	75%	84%	84%	Good
Unspecified	MICRO-CSR-15.sd.liveac...	BSNL	GigabitEthernet3	-	Outbound	15 Mbps	70%	78%	78%	Good
Unspecified	MICRO-CSR-15.sd.liveac...	BSNL	GigabitEthernet3	-	Inbound	14 Mbps	27%	28%	28%	Good
Unspecified	LON-Juniper-MX960-Edg...	Default Service Provider	em1	-	Outbound	1 Gbps	22%	22%	22%	Good
Unspecified	LON-Juniper-MX960-Edg...	Default Service Provider	em1	-	Inbound	1 Gbps	22%	22%	22%	Good
China	HE-CSR-208	Default Service Provider	GigabitEthernet3	-	Inbound	1 Gbps	16%	16%	16%	Good
China	HE-CSR-208	Default Service Provider	GigabitEthernet2	-	Outbound	1 Gbps	16%	16%	16%	Good

# Alert Notes Editor

- Add/change/delete notes on generated alerts

LiveAction

NX

New Features

918

286

3130

359165

admin

Alerts

Enter Filter Request Here

Active

Resolve Ignore Acknowledge Refresh Alerts View Options

SEVERITY	SITE	DEVICE	DESCRIPTION	TIME OPENED	ACTIVE FOR	CATEGORY	
<input type="checkbox"/>	Critical	Site	Device	Description		All	
<input type="checkbox"/>			MJ48AKYAKA3761VN...	Interface ZEN_LTE_0 on MJ48AKYAKA3761VNf01.migros.local could not be reached.	03 Oct 2023, 02:18 PM	about 1 month	Device, Inte
<input type="checkbox"/>			MJ48AKYAKA3761VN...	Interface ATIS_LTE_0 on MJ48AKYAKA3761VNf01.migros.local could not be reached.	03 Oct 2023, 02:18 PM	about 1 month	Device, Inte
<input type="checkbox"/>			LON-Juniper-EX2200-...	Interface ge-0/0/8 on LON-Juniper-EX2200-Switch-10.4.242.146 could not be reached.	03 Oct 2023, 02:14 PM	about 1 month	Device, Inte
<input type="checkbox"/>			LON-Juniper-EX2200-...	Interface ge-0/0/9 on LON-Juniper-EX2200-Switch-10.4.242.146 could not be reached.	03 Oct 2023, 02:14 PM	about 1 month	Device, Inte
<input type="checkbox"/>			LON-Juniper-EX2200-...	Interface ge-0/0/23 on LON-Juniper-EX2200-Switch-10.4.242.146 could not be reached.	03 Oct 2023, 02:14 PM	about 1 month	Device, Inte
<input type="checkbox"/>			LON-Juniper-EX2200-...	Interface ge-0/0/17 on LON-Juniper-EX2200-Switch-10.4.242.146 could not be reached.	03 Oct 2023, 02:14 PM	about 1 month	Device, Inte
<input type="checkbox"/>			LON-Juniper-EX2200-...	Interface ge-0/0/14 on LON-Juniper-EX2200-Switch-10.4.242.146 could not be reached.	03 Oct 2023, 02:14 PM	about 1 month	Device, Inte
<input type="checkbox"/>			LON-Juniper-EX2200-...	Interface ge-0/0/19 on LON-Juniper-EX2200-Switch-10.4.242.146 could not be reached.	03 Oct 2023, 02:14 PM	about 1 month	Device, Inte
<input type="checkbox"/>			LON-Juniper-EX2200-...	Interface ge-0/0/12 on LON-Juniper-EX2200-Switch-10.4.242.146 could not be reached.	03 Oct 2023, 02:14 PM	about 1 month	Device, Inte
<input type="checkbox"/>			LON-Juniper-EX2200-...	Interface ge-0/0/10 on LON-Juniper-EX2200-Switch-10.4.242.146 could not be reached.	03 Oct 2023, 02:14 PM	about 1 month	Device, Inte
<input type="checkbox"/>			LON-Juniper-EX2200-...	Interface ge-0/0/16 on LON-Juniper-EX2200-Switch-10.4.242.146 could not be reached.	03 Oct 2023, 02:14 PM	about 1 month	Device, Inte
<input type="checkbox"/>			LON-Juniper-EX2200-...	Interface ge-0/1/3 on LON-Juniper-EX2200-Switch-10.4.242.146 could not be reached.	03 Oct 2023, 02:14 PM	about 1 month	Device, Inte
<input type="checkbox"/>			LON-Juniper-EX2200-...	Interface ge-0/0/7 on LON-Juniper-EX2200-Switch-10.4.242.146 could not be reached.	03 Oct 2023, 02:14 PM	about 1 month	Device, Inte
<input type="checkbox"/>			LON-Juniper-EX2200-...	Interface ge-0/0/3 on LON-Juniper-EX2200-Switch-10.4.242.146 could not be reached.	03 Oct 2023, 02:14 PM	about 1 month	Device, Inte
<input type="checkbox"/>			LON-Juniper-EX2200-...	Interface ge-0/0/5 on LON-Juniper-EX2200-Switch-10.4.242.146 could not be reached.	03 Oct 2023, 02:14 PM	about 1 month	Device, Inte
<input type="checkbox"/>			LON-Juniper-EX2200-...	Interface ge-0/0/21 on LON-Juniper-EX2200-Switch-10.4.242.146 could not be reached.	03 Oct 2023, 02:14 PM	about 1 month	Device, Inte
<input type="checkbox"/>			LON-Juniper-EX2200-...	Interface ge-0/0/13 on LON-Juniper-EX2200-Switch-10.4.242.146 could not be reached.	03 Oct 2023, 02:14 PM	about 1 month	Device, Inte
<input type="checkbox"/>			LON-Juniper-EX2200-...	Interface ge-0/0/6 on LON-Juniper-EX2200-Switch-10.4.242.146 could not be reached.	03 Oct 2023, 02:14 PM	about 1 month	Device, Inte
<input type="checkbox"/>			LON-Juniper-EX2200-...	Interface ge-0/0/4 on LON-Juniper-EX2200-Switch-10.4.242.146 could not be reached.	03 Oct 2023, 02:14 PM	about 1 month	Device, Inte
<input type="checkbox"/>			LON-Juniper-EX2200-...	Interface ge-0/0/18 on LON-Juniper-EX2200-Switch-10.4.242.146 could not be reached.	03 Oct 2023, 02:14 PM	about 1 month	Device, Inte
<input type="checkbox"/>			LON-Juniper-EX2200-...	Interface ge-0/0/11 on LON-Juniper-EX2200-Switch-10.4.242.146 could not be reached.	03 Oct 2023, 02:14 PM	about 1 month	Device, Inte

Rows: 629 / 4334

Interface Reachability

Status & Time

Status: Active

Time opened: 03 Oct 2023, 02:14 PM

Active for: about 1 month

Source Info

Site: Unspecified

Device: LON-Juniper-EX2200-Switch-10.4.242.146

Interface: ge-0/0/8

Interface Description: N/A

Event: Report

Description

Interface ge-0/0/8 on LON-Juniper-EX2200-Switch-10.4.242.146 could not be reached.

Details

Previous Interface Status: Down

Triggering Interface Status: Down

Notes

Carrier ticket INC1000121

Save